

Distributed by



AIR quality

MOBILE AIR DECONTAMINATION UNIT

PLASMAIR®



PLASMAIR®

Guardian

- HEPA-MD® technology
- Destruction of microorganisms
- Highly efficient filtration
- Chemical, VOC and Odor removal
- Very silent

PLASMAIR® Guardian is mobile air decontamination unit which incorporates HEPA-MD® technology. It allows to treat large volume rooms quickly.

Use: Hematology, Bone Marrow Transplant unit, solid transplant unit and onco-hematology.

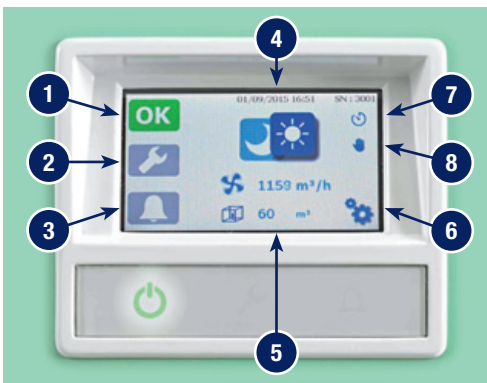
Related products: BIOCAIR®, IMMUNAIR®.



KEY FEATURES

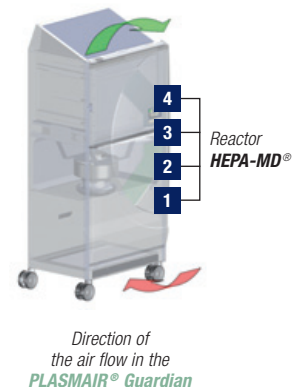
Power supply	~ 100 V, ~ 110/120 V, ~ 230 V	50/60 Hz
Maximum power supply	600 VA / 600 W	
Electrical protection	Isolated by removable power cable	Ph + N bipolar switch with fuses
Volumetric flow rate	Air flow continuously adjustable from 500 m³/h to 2,500 m³/h (Maximum flow rate, unused pre filter)	
Sound level as per NF-EN ISO 3744:2012 standard at 1 m / 2 m (unused pre-filter)	500 m³/h - 30 dB(A) / <30 dB(A) 2,000 m³/h - 53 dB(A) / 49 dB(A)	1,000 m³/h - 39 dB(A) / 35 dB(A) 2,500 m³/h - 58 dB(A) / 54 dB(A)
Air treatment capacity (volume of room)	Potentially all volumes according to desired level of efficiency	
Aerosol filtration efficiency at 1,000 m³/h (Unused pre-filter and reactor)	> 99.999%	Particles Ø ≥ 0.3 µm
Microorganisms destruction	Yes, with HEPA-MD® technology	
Microbiological cleanliness class	Total flora	M10 from 18 ACH
	Fungi	M1 from 18 ACH
Particle cleanliness class	ISO 7 from ACH 12 vol/h	
Decontamination kinetic	CP _{0.5} 12 at 15 ACH	CP _{0.5} 7 at 30 ACH
Water/solid protection	Complete device	IP40
	Control panel	IP40
Overall dimensions	H 1,940 x L 912 x D 690 mm	
Ground support (Offset swivel casters)	Small side	475 to 635 mm
	Large side	685 to 845 mm
Weight	191 kg	
Maximum floor load	587 kg/m² (ground support 475 x 685 mm)	
Environmental operating range	Temperature	+5 °C to +35 °C
	Relative humidity*	< 95 % non-condensing
Environmental storage range	Temperature	0 °C to 45 °C
	Relative humidity	20 % to 90 %
	Dusty	< 1 mg/m³

* During intensive wet cleaning of the installation area, it is strongly recommended to temporarily switch off the appliance to limit the peak moisture effect.



CONTROL PANEL

1	OK	This icon indicates that the unit is working properly
2	Warning	This icon indicates a warning
3	Alarm	This icon indicates an alarm
4	Day/Night	This icon indicates the ventilation setting: DAY/NIGHT
5	Flow rate	This icon indicates room flow rate and volume
6	Settings	Access key to setup menu
7	Automatic	Signal that automatic night-time programmer is activated
8	Manual	Signal that manual mode is activated



airinspace®
14, rue Jean Monnet
78990 Élancourt
France
T. +33 (0)1 30 07 01 01
F. +33 (0)1 30 07 01 02
contact@airinspace.com

Distributed by

