

AUTRE TIP!

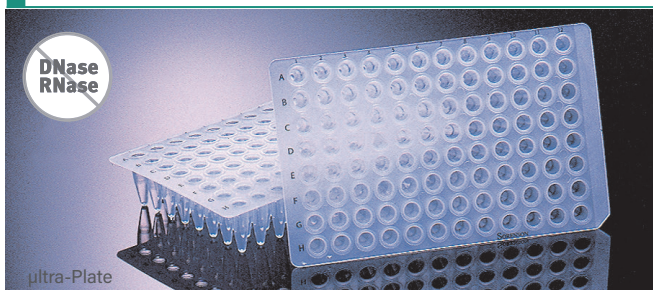
How can you tell the difference between a standard profile and a low profile 96-well PCR block or plate?

Skirted PCR plates are always low profile, unlike non-skirted or semi-skirted plates, which are available in both formats.

	Work volume	Total well volume	Height of well
Standard profile	0.2 ml	0.3 ml	Approx. 20 mm
Low profile (fast)	0.1 ml	0.2 ml	Approx. 15 mm

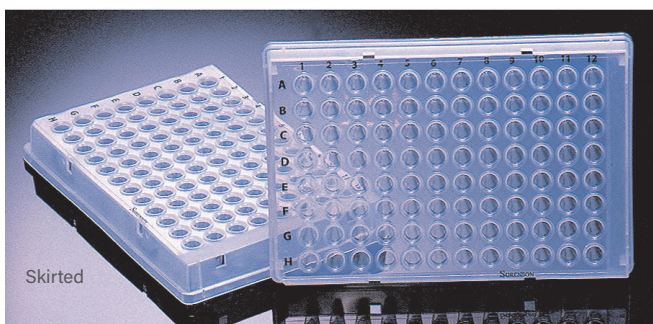
Multi 96-well PCR plates

MULTI



Polypropylene thin-walled 96-well plates for use with all types of thermal cyclers.

- Printed alphanumeric grid
- Rigid, heat-resistant
- Models with low-profile skirt or without ultra-flat skirt



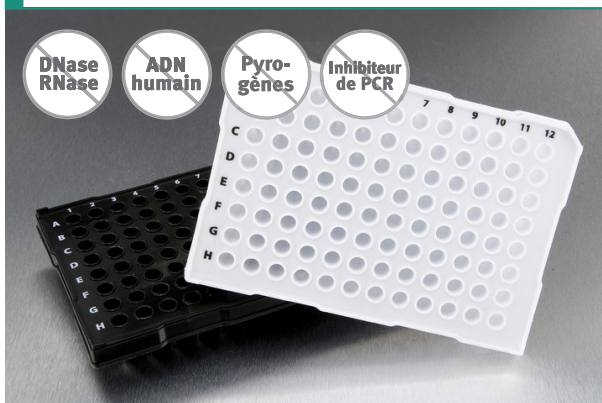
Compatibility	ultra-Plate non skirted		Skirted plate low profile	
	1	6	1	6
Colour	Cat. No.	€ for 25	Part no.	€ for 25
Natural	021970	NC -	023080	NC -
Natural - per 100	026190	NC -	02844	NC -
Blue	021990	NC -	023100	NC -
Yellow	022010	NC -	023120	NC -
Red	021980	NC -	023090	NC -
Green	022000	NC -	023110	NC -
Purple	022170	NC -	-	-
Black	037860	NC -	037360	NC -
White	037870	NC -	037370	NC -

Accessoires

Part no.	Designation	Units/box	€/box
106570B	Aluminium sealing tape	100	NC -

Multi half-skirted 96-well PCR plates for ABI

MULTI



For ABI thermocyclers and DNA analysers.

- Pan cut for easy orientation of the plate
- Alphanumeric and black printing of the wells
- Raised edge all around the plate for better overlapping of the plates
- With a half-skirt for easy marking area and handling by robots

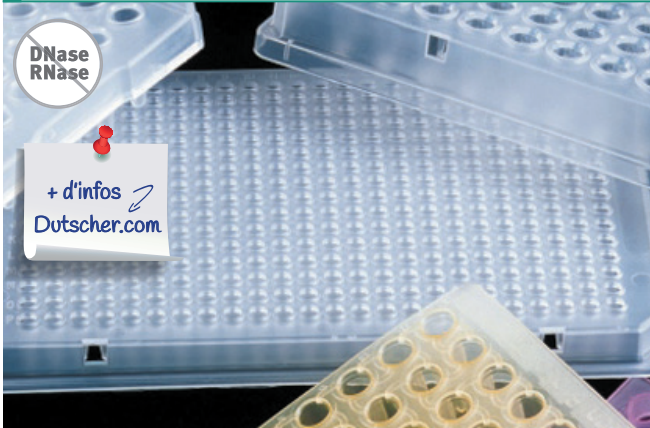
Colour	Natural	Red	Blue	Green	Yellow	Purple	Black	White	Natural*
Compatibility	3								
Part no.	035800	035820	035840	035810	035830	035850	037380	037390	035900*
€ per 25	NC -	NC -	NC -	NC -	NC -	NC -	NC -	NC -	NC -

* Prices for 4 x 25

Distributed by

ultra-Plate 384-well PCR plate

M_μTI



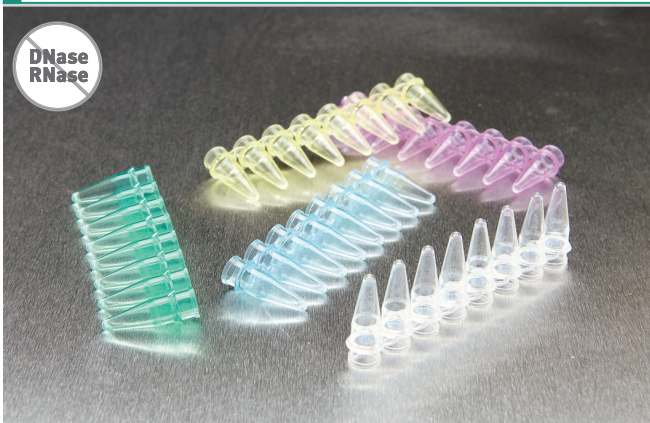
384-well rigid polypropylene PCR plate.
Compatible with ABI 3700 and ABI 3730.

- Alphanumeric index printed in black
- Total volume of each well: 40 μl
- Work volume for each well: 25 μl
- Autoclavable

Colour	Natural	Red	Blue	Green	Yellow	Black	White	€ for 50
Compatibility	7							
Part no.	039620	037910	037920	037930	037940	037970	037980	NC -

M_μTI 0.2 ml microtube strips

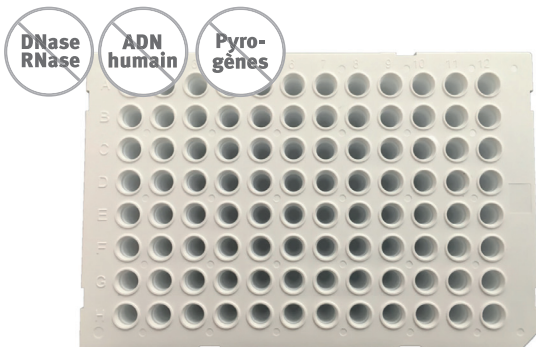
M_μTI



- Extra-thin wall, in strips of 8
- Easy to cut into individual tubes
- Digital marking on each tube

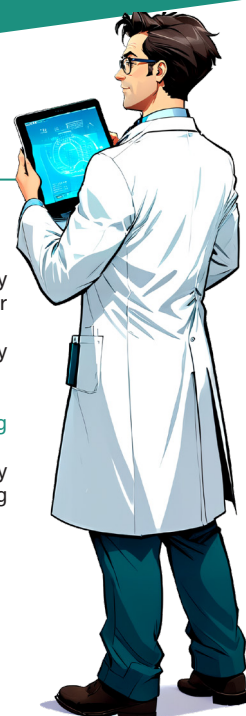
Sterile	Natural	Red	Blue	Green	Yellow	Units/box	€/box
Microtubes + 8-strip dome cap							
No	116380	114430	116400	116410	116420	250 x 8	NC -
Microtubes + 8-strip dome cap							
Yes	116280	116290	116300	116310	-	120 x 8	NC -
8-Microtube strip (without cap)							
No	138790	-	-	-	-	250 x 8	NC -
8-strip dome cap							
No	038780	-	-	-	-	250 x 8	NC -
8-Strip optical flat caps (quantitative PCR)							
No	037990	-	-	-	-	250 x 8	NC -

White semi-skirted low profile 96-well PCR plate



- Ultra-thin, uniform wall for excellent heat transfer and optimum results
- Produced from ultra-pure polypropylene
- Plate compatible with ABI StepOne Plus, BioRad (Opticon ,Opticon2, Chromo4 and CFX96), Roche (LightCycler 480 and LightCycler 96), Analytik-Jena (qTOWER 2.0 and qTOWER 2.2)
- Total volume 0.2 ml, maximum working volume 0.1 ml
- Alphanumeric code

Part no.	Designation	€ for 50
257783	White semi-skirted low profile 96-well PCR plate	NC -



RIGID PCR PLATES

The term "rigid plates" refers to PCR plates that have a greater rigidity than conventional polypropylene PCR plates. There are different types depending on how this property is obtained.

Generally, it is the material of the plate frame that gives it its rigidity. Most often, this is a polycarbonate frame (Framestar by 4Titide (Azenta), Solidframe by Eppendorf, Twintec by Eppendorf or Armadillo by Thermo Scientific), but it can also be another material such as the biocomposite B-frame by Arvensis, made from around 50% plant fibres. Bioplastics offers rigid plates that are 100% polypropylene, so they can be recycled depending on how they are used. The rigidity then lies in the addition of structural reinforcements.

The main benefits of rigid plates are that they are easy for robots to grip and are more resistant to torsion and deformation during the repeated temperature changes that occur during PCR amplification.

This limits the potential problems of evaporation during a PCR, which alters the reaction since reagent concentrations will vary from well to well and over time. The results obtained are then falsified and the manipulation will have to be repeated, resulting in additional costs and wasted time.

These high-quality plates are therefore preferable if:

- They are used with robots or automatic dispensers
- Have you already experienced evaporation with your usual plates?
- Your samples or reagents are precious and you want to prevent any risk of evaporation

SolidFrame bi-component PCR plates

- High quality plates for all PCR and qPCR applications
- Rigid polycarbonate frame
- Rigidity of the plates to prevent deformation by temperature and the risk of evaporation due to loss of watertightness with the film
- Ideal for robot handling
- Ultra-thin walled blank medical grade polypropylene wells for optimum temperature transfer
- HS (high sensitivity) white-well model for improved detection of low-abundance targets



384-well plates

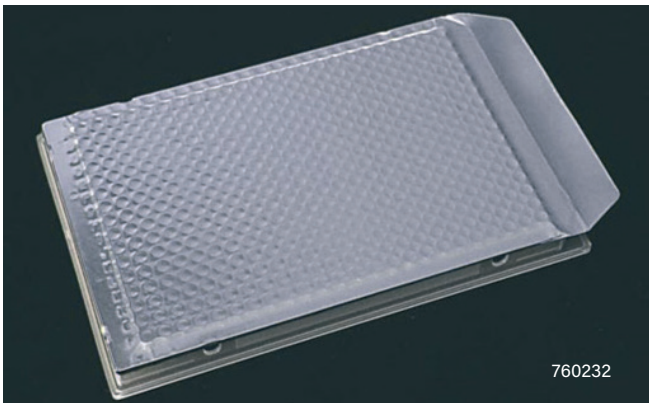
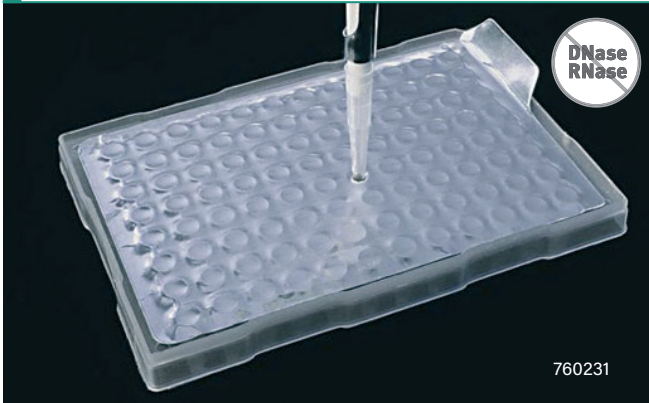
Frame colour	Well colour	Skirt	Compa-tibility	Part no.	€
Black	Natural	Skirted	7	257306	NC -
Black	White	Skirted	7	257307	NC -
White	White	Skirted	8	257313	NC -

96-well plates

Frame colour	Well colour	Skirt	Style	Compa-tibility	Part no.	€
Standard profile (0.2 ml)						
Natural	Natural	Half-skirted	ABI	4	257301	NC -
Natural	White	Half-skirted	ABI		257302	NC -
Natural	Natural	Half-skirted	Universal	2	257298	NC -
Natural	White	Half-skirted	Universal		257299	NC -
Natural	High sensitivity white	Half-skirted	Universal		257300	NC -
Low profile (0.1 ml)						
White	White	Half-skirted	Roche	5	257311	NC -
White	White, highly sensitive	Half-skirted	Roche		257312	NC -
Natural	Natural	Half-skirted	Roche		257296	NC -
Natural	White	Half-skirted	Roche		257297	NC -
White	Natural	Skirted	Standard	6	257308	NC -
White	White	Skirted	Standard		257309	NC -
White	White, highly sensitive	Skirted	Standard		257310	NC -
Black	Natural	Skirted	Standard		257303	NC -
Black	White	Skirted	Standard		257304	NC -
Black	White, highly sensitive	Skirted	Standard		257305	NC -



AlumaSeal 96® and AlumaSeal 384® films



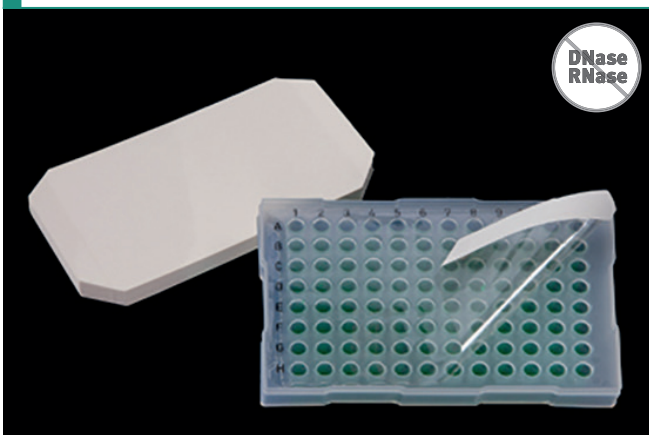
Applications: PCR, long-term storage

- 38.1 µm aluminium
- Operating temperature: - 80 °C to +120 °C
- With a tab
- Drillable
- Opaque
- Reinforced sealing for 96-well plates

Part no.	Designation	Dimensions (mm)	Units/box	€/box
760231	AlumaSeal 96® film for 96-well plate, non-skirted	117.5 x 77.8	100	NC -
760232	AlumaSeal 384® film for 384-well plate or Deepwell	123.8 x 82.6	100	NC -



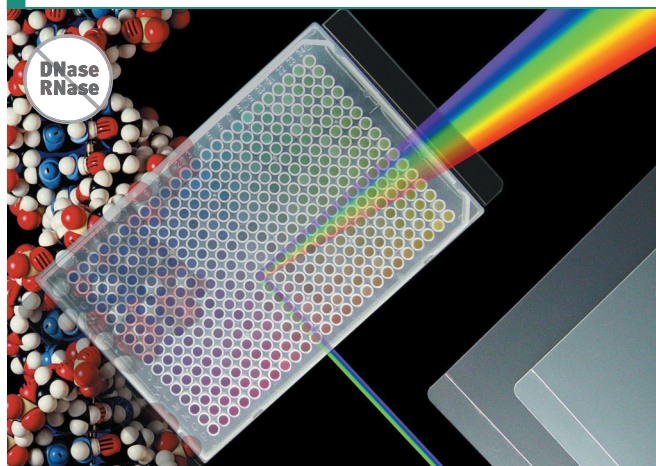
eXTReme™ Seal® films



- Applications: PCR
- Made of 50.8 µm polyester
- Operating temperature: -20 °C to 120 °C
- With two detachable tabs
- Transparent
- Strong adhesive to minimise evaporation
- Do not leave residues

Part no.	Designation	Dim. (mm)	Units/box	€/box
765267	eXTReme™ Seal® film for unskirted plate	118.1 x 78.3	100	NC -
765276	eXTReme™ Seal Large® film for half-skirted and skirted plate	121.9 x 81.5	100	NC -

ThermalSeal® RT2™ and RT2RR™ Films

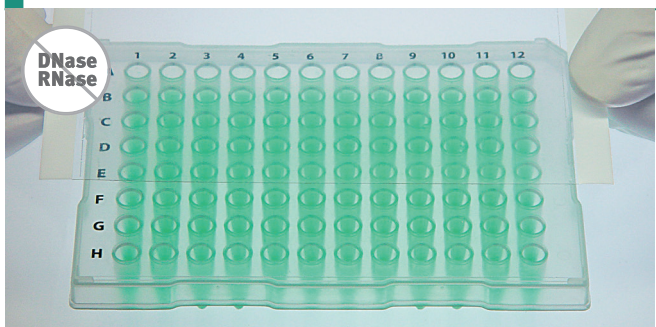


- Application: qPCR
- Made of 50.8 µm polyester
- Operating temperature: -40 °C to +120 °C
- With two detachable tabs
- Optically clear, low autofluorescence
- High optical quality films with excellent adhesion

Part no.	Designation	Dimensions (mm)	Units/box	€/box
760236	ThermalSeal® RT2RR™ film for unskirted plate	118.1 x 77.8	100	NC -
760208	ThermalSeal® RT2™ film for skirted or half-skirted plate	121.9 x 79.4	100	NC -



ThermalSeal® RTS™ films

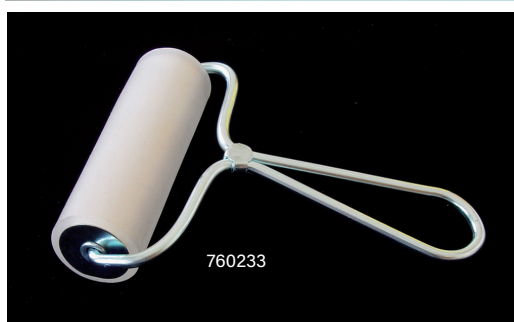


- Applications: qPCR, long-term storage, crystallography and HPLC
- Made of 50.8 µm polyofilm
- Operating temperature: -80 °C to +105 °C
- For all types of plates
- Dimensions without tab: 116.2 x 78.3 mm
- With two detachable tabs (except roll film)
- Optically clear, low autofluorescence
- Good chemical resistance
- Silicone adhesive is released only when pressure is applied for a perfect adhesion without interference with the sample

Part no.	Designation	Units/box	€/box
765246	ThermalSeal® RTS™ Film	100	NC -
765279	ThermalSeal® RTS™ Film	25	NC -
765265	ThermalSeal® RTS™ sterile film	100	NC -
765249	ThermalSeal® RTS™ film on 65 m roll	1	NC -

Accessory

Cat. No.	Designation	€
760233	Applicator	NC -



		Type of plate	
Brand	Block format	Compatibility group Model	
ABI / Life technologies / Thermo Fisher scientific	96	3100, 3130XL, 3500, 3500XL, 3730, 3730XL	
		7000, 7300, 7500, 7700, 7900 HT	
		7900 HT	
		7500, 7900, 7900HT (fast block)	
		GeneAmp 2700, 2720	
		GeneAmp 9600	
		GeneAmp 9700	
		GeneAmp 9800 (fast block)	
		ProFlex	
		QuantStudio 3, 5, 6, 7, 12K, ViiA7 (standard block)	
		QuantStudio 3, 5, 6, 7, 12K, ViiA7 (fast block)	
		SimpliAmp	
		StepOne Plus	
		Veriti block 96 0.2 ml	
Veriti block 96 fast 0.1 ml			
Agilent	384	3100, 3130XL, 3500, 3500XL, 3730, 3730XL	
		GeneAmp 9700, Veriti, Proflex, Multiblock system	
		QuantStudio 5, 6, 7, 12K, ViiA7, 7900 HT FAST	
		Veriti 384-well	
Agilent	96	AriaMx qPCR System	
		Mx3000P, Mx3005P	
	384	Mx4000	
		Robocycler Gradient (Stratagen)	
Analytic Jena / Biometra	96	Surecyclers 8800	
		384	Surecyclers 8800
			Flexcycler2, T1 Thermocycler, T Gradient, T One, T Advanced, T Professional series, T robot 96, SpeedCycler2 SP, SPR
Axygen	96	qTOWER3 (G, touch), Toptical	
		Flexcycler2, T1 Thermocycler, Tadvanced, TProfessional, Trobot, Qtower	
Benchmark	96	MaxyGene II	
		TC9639	
Bioer	96	GeneExplorer 96	
		GeneTouch 96	
		LifeEo	
		Lifetouch	
		Quantgene 9600	
	384	GeneTouch 384	
		C1000, C1000 Touch, S1000	
		CFX Connect, CFX96, CFX96 Touch	
		CFX96 Touch Deep Well	
		Chromo4	
Bio-Rad / MJ research	96	DNA Engine Opticon and Opticon 2	
		DNA Engine, DNA Engine Tetrad, Tetrad 2, DNA Engine Dyad, Dyad Disciple	
		iCycler	
		MyCycler	
		MylQ, iCycler, IQ, IQ 4, IQ 5	
		Personal, PTC100, 200, 220, 221, 225, 240	
		T100	
		384	C1000, C1000 Touch, S1000
			CFX384, CFX384 Touch
			DNA Engine, Tetrad, Tetrad 2, Dyad, Dyad Disciple
Blue-ray	96	PTC200, 220, 221, 225, 240	
		TurboCycler 2	
		TurboCycler lite	
Eppendorf	96	TurboQ	
		MasterCycler Pro, Pro S, nexus, nexus gradient, nexus SX1, nexus GSX1	
		Mastercycler X50	
Roche	384	MasterCycler ep 384 / Pro 384	
		LC96, LC480	
Sansure	96	Roche384	
Sensoquest	96	SLAN-96S	
		Labcycler aluminium block 96 wells	
Takara	384	Labcycler silver block 96 wells	
		Labcycler block 384	
Techne	96	Dice touch, Gradient	
		Prime, PrimeG, Prime Elite, Prime Elite Satellite, PCRmax Alpha cycler 1, 2, 4	
		TC-412	
		TC-512, Genius, Genius Quad, Touchgene, Touchgene Gradient, Flexigene	
384	TC-PLUS		
	PCRmax Alpha cycler 1, 2, 4		
384	Prime, PrimeG, Prime Elite, Prime Elite Satellite		
	TC412, TC512, Genius, Genius Quad, Flexigene		

