



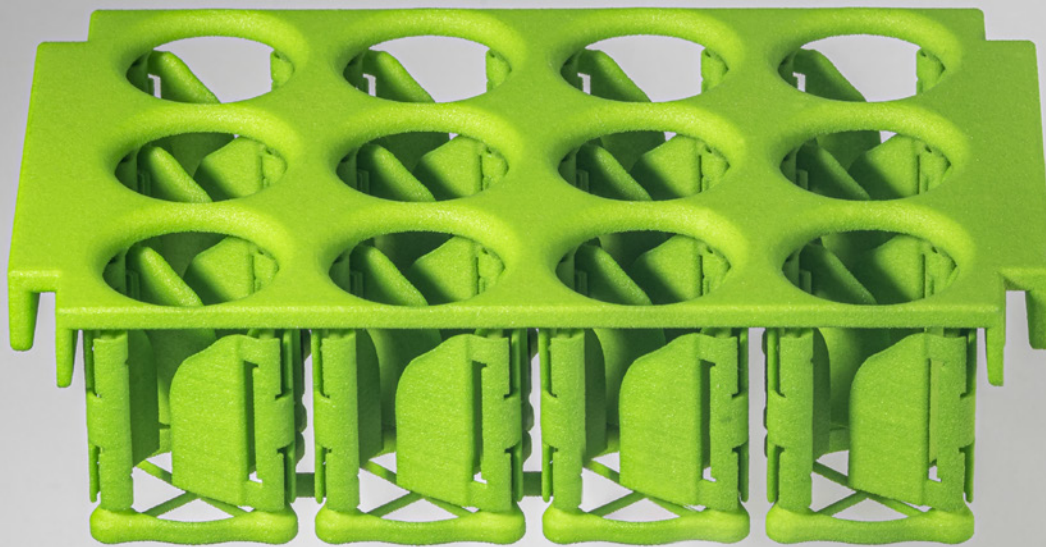
BETTER BASICS
LABORBEDARF

Distributed by

BIOMEDICA
www.bmgrp.eu



1ST QUARTER 2025



Product catalogue

Modules

Unlock Your Lab Potential

Table of Content

Your Advantage in Everyday Laboratory Work.....	3
Module I for SmartRack®-Products.....	6
The Configuration.....	6
Modules.....	7
Additional accessories.....	25
SmartStand.....	26
Customizing	27
Item overview.....	29
Technical information.....	33

Your Advantage in Everyday Laboratory Work

Better Basics Laborbedarf – Your Advantage in Everyday Laboratory Work

Better Basics Laborbedarf optimises laboratories and their workspaces with innovative, award-winning organisational systems. We support our customers in creating the best possible working environment for their laboratory staff, helping to unlock the full potential of their laboratories. This approach ensures consistently high quality, efficiency, and process stability in the lab while providing a safe, ergonomic workplace with satisfied employees.

Enhancing Employee Satisfaction

Our SmartRack® offers a comprehensive system to optimise laboratory workflows. With over 100 modular solutions, they not only ensure order but also noticeably improve working conditions. Enhanced ergonomics, reduced movement paths, and clearly structured workstations increase both efficiency and employee satisfaction. Safe and organised environments reduce stress and promote job satisfaction. Furthermore, they demonstrably contribute to improved workplace safety and occupational health through thoughtful placement and ease of use.

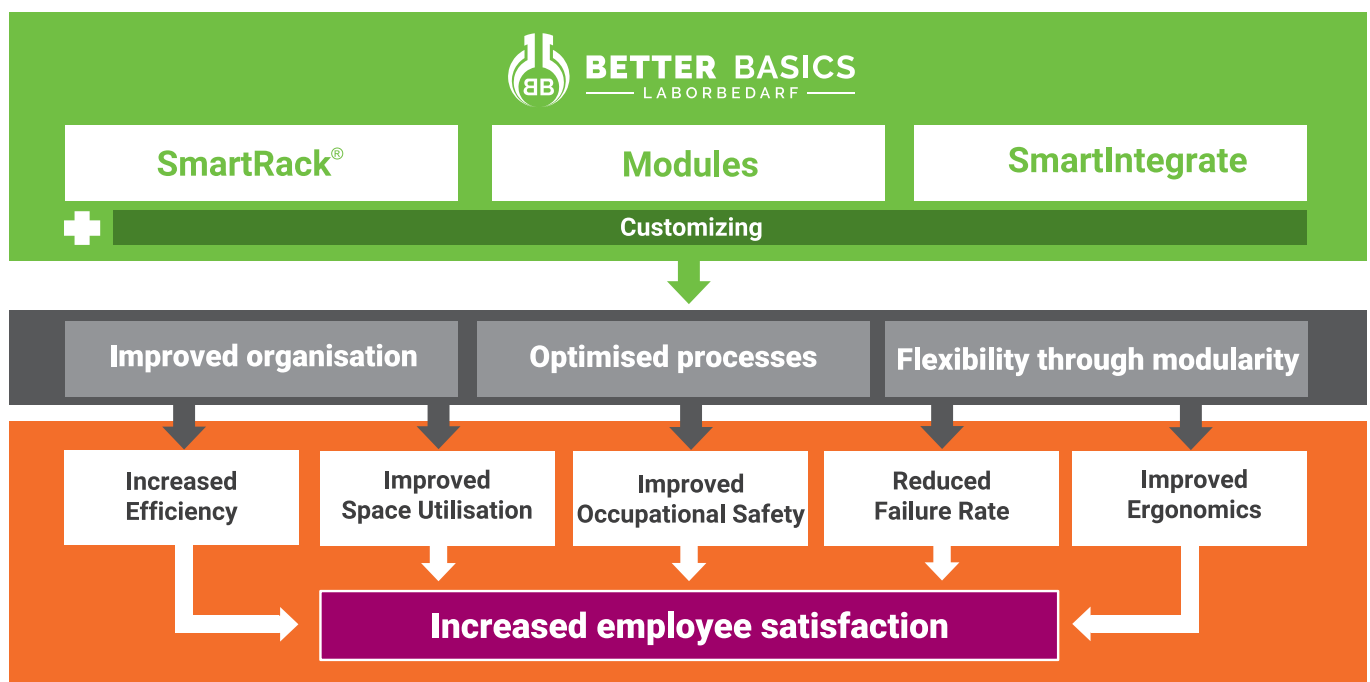
A System for Sustainable Process Improvement

Our product families are designed to standardise workflows and save time. The modular concept of the SmartRack® allows for flexible adaptations to any laboratory environment – from safety workbenches to large open-plan labs. These systems not only optimise space utilisation but also increase efficiency by an average of 30% and save up to 80% space. With a wide range of modules and accessories, they offer customised solutions for every need.

Efficient, Safe, and Satisfying

For decision-makers and managers, the SmartRack® ensure process stability and economical resource use. At the same time, these systems provide innovation managers and organisational developers with the ideal basis for forward-looking workplace designs. For laboratory staff, this means fewer errors thanks to well-structured work areas, a more relaxed working environment, and often the ability to finish earlier due to significantly improved workflows.

Discover how Better Basics Laborbedarf can transform your everyday laboratory work – for more efficient processes, satisfied employees, and excellent results.



▶ SmartRack®, the mobile solution for: laboratory workbench, fume hood, safety cabinet



+ Customised solutions

▶ Modules

- Currently, more than 100 modules
- All modules in the Better Basics catalogue can be used universally in all SmartRack® solutions
- Customized modules can be developed based on the specific customer needs, all customized modules can be used in all SmartRack® solutions



+ Customised solutions

Modules – Versatility for Every System

The modules from Better Basics are the ideal building blocks for a well-organised laboratory. They can be seamlessly integrated into the SmartRack® system.

Whether pipette holders, storage boxes, or inserts for specialised applications, all modules are easy to switch and ensure precise adaptation to your workflows. Their innovative design and robustness contribute to the efficiency and ergonomics of every workstation.



Photo: A Selection of Innovative Modules for the SmartRack®

Modules | The Configuration

1. Selection of the frame size and frame type

SmartRack® primus (mini)
SmartRack® classic (mini)



2. Selection of Modules: Holders and Storage Boxes Storage Box Inserts



Two SmartRack® and one SmartFrame MB 001 with a SmartStand in a Wesemann fume hood

Storage box



The module is the basis for storing and fixating various smaller laboratory equipment. The storage box can hold a maximum of three storage box inserts, which can be arranged and combined as required. Alternatively, the storage box can also be used without storage box inserts.

Item	Type	PU	Item no.
Storage box	for 2 storage box inserts	1	01185
Storage box	for 3 storage box inserts	1	01142

Storage box insert – for small accessories

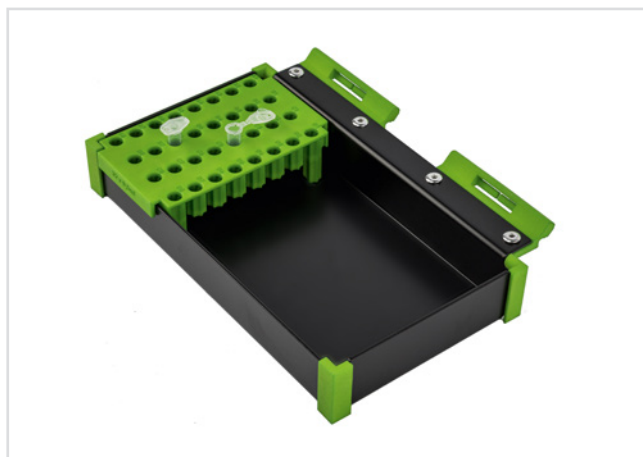


The module can be inserted as required into the storage box and enables easy storage and fixation of small accessories (e.g. pens, spatulas or tweezers).

Storage box and small accessories not included in scope of delivery

Item	Type	PU	Item no.
Storage box insert – for small accessories		1	01148

Storage box insert – for microreaction vessels



The module can be inserted as required into the storage box and enables easy storage and fixation of microreaction vessels.

Storage box and microreaction vessels not included in scope of delivery

Item	Type	PU	Item no.
Storage box insert – for microreaction vessels	32 x 0,5 ml	1	01104
Storage box insert – for microreaction vessels	20 x 2 ml	1	01130

Storage box insert – for sample containers and test tubes



The module can be inserted as required into the storage box and enables easy storage and holding of sample containers and test tubes. It is equipped with a spring mechanism that provides a secure hold for sample vials and test tubes of different diameters.

Storage box, sample containers and test tubes not included in scope of delivery

Item	Type	PU	Item no.
Storage box insert – for sample containers and test tubes	20 x Ø 3 - 10 mm	1	01161
Storage box insert – for sample containers and test tubes	15 x Ø 8 - 12 mm	1	01181
Storage box insert – for sample containers and test tubes	12 x Ø 10 - 20 mm	1	01160
Storage box insert – for sample containers and test tubes	8 x Ø 18 - 22 mm	1	01182
Storage box insert – for sample containers and test tubes	6 x Ø 20 - 30 mm	1	01159

Storage box insert – for centrifuge tubes



The module can be inserted as required into the storage box and enables easy storage and fixation of centrifuge tubes.

Storage box and centrifuge tubes not included in scope of delivery

Item	Type	PU	Item no.
Storage box insert – for centrifuge tubes	12 x 15 ml	1	01128
Storage box insert – for centrifuge tubes	6 x 15 ml, 4 x 50 ml	1	01102
Storage box insert – for centrifuge tubes	6 x 50 ml	1	01129

Barcode scanner holder



The module enables easy attachment of a barcode scanner.

Barcode scanner not included in scope of delivery

Item	Type	PU	Item no.
Barcode scanner holder	suitable for scanners such as Newland NLS-HR22 and Aplic 304674	1	01163

Holder for chromatography column



The module allows effortless attachment of chromatography columns. The bracket adjusts to the column circumference via a snap-in mechanism to provide a secure fit. If the length of the suspended equipment exceeds 15 cm, we recommend the use of additional holder modules, stacked in the required number, to ensure the stability of the set-up. Both the outside of the chromatography column and the silicone covers of the chromatography column holders must be clean and free of dust and grease.

Chromatography column not included in scope of delivery

Item	Type	PU	Item no.
Holder for chromatography column	Ø 5 - 10 mm	1	01177
Holder for chromatography column	Ø 10 - 15 mm	1	01176
Holder for chromatography column	Ø 15 - 25 mm	1	01165
Holder for chromatography column	Ø 25 - 35 mm	1	01107
Holder for chromatography column	Ø 35 - 46 mm	1	01139
Holder for chromatography column	Ø 46 - 56 mm	1	01179

Holder for Cup



The module enables a 500 ml AKU® drinking cup to be securely attached, which can be used for storage or as storage for consumables such as plastic transfers or disposable pipettes. The 500 ml AKU® drinking cup is included in the scope of delivery.

Item	Type	PU	Item no.
Holder for Cup	for AKU® PP-Drinking cup, 500 ml	1	01213

Holder for Erlenmeyer flasks



The module allows easy attachment of conical flasks with a beaded rim. The curved front means the conical flask is securely fixed in the module and is protected against falling out.

Erlenmeyer flask not included in scope of delivery

Item	Type	PU	Item no.
Holder for Erlenmeyer flasks	Erlenmeyer flasks, Wide neck 25 ml, 100 ml, Erlenmeyer flasks, Narrow neck 250 ml, 500 ml	1	01108
Holder for Erlenmeyer flasks	Erlenmeyer flasks, Wide neck 250 ml, 500 ml, 1000 ml, Erlenmeyer flasks, Narrow neck 2000 ml, 3000 ml, 5000 ml	1	01140

Holder for glassware with standard taper



The module allows easy attachment of glassware with standard ground joint ST14. The specially shaped recess prevents the glassware from falling out. Please note the information on standard ground joint tolerances of various standard taper (ST) on page 33.

Glassware not included in scope of delivery

Item	Type	PU	Item no.
Holder for glassware with ST14		1	01111
Holder for glassware with ST29		1	01114

Holder for glassware with standard taper, plus closure



The module corresponds to the module holder for glassware with ST14, but is also equipped with a rotatable locking ring that protects glassware with standard joint ST14 against falling out. Please note the information on standard ground joint tolerances of various standard taper (ST) on page 33.

Glassware not included in scope of delivery

Item	Type	PU	Item no.
Holder for glassware with ST14, plus closure		1	01112
Holder for glassware with ST29, plus closure		1	01115

Holder for glassware with standard taper, extended



The module corresponds in design and function to the module holder for glass devices with ST14. However, the extended version is particularly suitable for easily hanging particularly large round-bottomed flasks or separating funnels, for example. Please note the information on standard ground joint tolerances of various standard taper (ST) on page 33.

Glassware not included in scope of delivery

Item	Type	PU	Item no.
Holder for glassware with ST14, extended		1	01113
Holder for glassware with ST29, extended		1	01116

Holder for glove / tissue boxes



The module allows easy attachment of glove or tissue boxes. The width of the bracket can be adjusted as required and adapted to the size of different boxes. Being able to pull out these consumables towards you makes it easy to remove them even when the box is low.

Glove / tissue box not included in scope of delivery

Item	Type	PU	Item no.
Holder for glove / tissue boxes		1	01143

Holder for cannula disposal container



The module enables the simple insertion of a cannula discharge box.

Cannula disposal container not included in scope of delivery

Item	Type	PU	Item no.
Holder for cannula disposal container		1	01174

Holder for kitchen roll



The module enables easy hanging of kitchen rolls. The roll can rotate in the module, ensuring single or multiple sheets can be unrolled easily.

Kitchen roll not included in scope of delivery

Item	Type	PU	Item no.
Holder for kitchen roll		1	01162

Holder for cuvettes



The module makes it easy to store and fix cuvettes. Due to the special shape of the recesses, the side surfaces of the cuvette do not come into direct contact with the holder. The dimensions given refer to the layer thickness of the cuvette.

Cuvettes not included in scope of delivery

Item	Type	PU	Item no.
Holder for cuvettes	10 x (10 mm x 10 mm)	1	01183

Holder for laboratory screw top bottles



The module enables easy attachment of laboratory screw top bottles. The module is equipped with a rotatable locking ring, which provides additional protection for the laboratory screw top bottles against falling out.

Laboratory screw top bottle not included in scope of delivery

Item	Type	PU	Item no.
Holder for laboratory screw top bottles	10 - 25 ml (GL25)	1	01120
Holder for laboratory screw top bottles	50 ml (GL32)	1	01121
Holder for laboratory screw top bottles	100 - 1000 ml (GL45)	1	01122

Holder for microliter syringes



The module allows three microliter syringes to be safely attached. The snap-in mechanism provides a secure hold for the attached microliter syringes. The shape of the module shields the needles of the microliter syringes and thus protects the user against accidental contact with the tip of the needle.

Microliter syringes not included in scope of delivery

Item	Type	PU	Item no.
Holder for microliter syringes		1	01155

Modules

Holder for bin liner



The module allows easy attachment of bin liners for small waste. Contamination can be prevented by disposing of waste directly where you are working.

Bin liner not included in scope of delivery

Item	Type	PU	Item no.
Holder for bin liner		1	01202

Holder for pipettes



The module allows easy attachment of pipettes. The pipette tips are not affected and therefore not contaminated.

Pipettes not included in scope of delivery

Item	Type	PU	Item no.
Holder for pipettes	for Eppendorf Multipipette® E3 / E3x / stram / Xstream	1	01189
Holder for pipettes	for Eppendorf Reference®	1	01164
Holder for pipettes	for Eppendorf Reference® 2	1	01168
Holder for pipettes	for Gilson® PIPETMAN® Classic / G	1	01166
Holder for pipettes	for INTEGRA VIAFLOW or for INTEGRA VOYAGER	1	01184

Holder for pipettes with hook



The module allows easy attachment of up to three pipettes with hook. The pipette tips are not affected and therefore not contaminated.

Pipettes not included in scope of delivery

Item	Type	PU	Item no.
Holder for 2 pipettes with hook		1	01180
Holder for 3 pipettes with hook		1	01145

Holder for pipette tip boxes



The module enables easy attachment of pipette tip boxes from different manufacturers and of different sizes. Due to a magnet integrated in the module and a magnetic stainless steel round inserted by the user into the pipette tip box, the secure hold of the pipette tip box is ensured. Additional stainless steel rounds can be ordered for working with multiple pipette tip boxes.

Pipette tip box not included in scope of delivery

Item	Type	PU	Item no.
Holder for pipette tip boxes		1	01147
Stainless steel round for insertion into pipette tip boxes		1	01167

Modules

Holder for pipetting aid



The module enables the safe attachment of a pipetting aid.

Pipetting aid not included in scope of delivery

Item	Type	PU	Item no.
Holder for pipetting aid	for Eppendorf Easytip® 3	1	01203
Holder for pipetting aid	for HIRSCHMANN® pipetus®	1	01188
Holder for pipetting aid	for INTEGRA Pipetboy 2	1	01154
Holder for pipetting aid	for INTEGRA Pipetboy pro	1	01156
Holder for pipetting aid	for BRAND accu-jet® pro	1	01178
Holder for pipetting aid	for BRAND accu-jet® S	1	01157
Holder for pipetting aid	for Thermo Scientific Matrix	1	01186
Holder for pipetting aid	for TPP Turbo-Fix	1	01207
Holder for pipetting aid	for VWR® Powerpette Pro	1	01199

Holder for separating funnel / shaking funnel



The module allows easy attachment of separating funnels / shaking funnels.

Note:

The diameter of the separating funnel / shaking funnel is measured at its widest point

Separating funnel / shaking funnel not included in scope of delivery

Item	Type	PU	Item no.
Holder for separating funnel / shaking funnel	Ø 45 - 85 mm	1	01152
Holder for separating funnel / shaking funnel	Ø 85 - 105 mm	1	01149
Holder for separating funnel / shaking funnel	Ø > 105 mm	1	01153

Holder for sensor systems



The module enables the safe attachment of a sensor system.

Sensor system not included in scope of delivery

Item	Type	PU	Item no.
Holder for sensor systems	for essentim sphere	1	01208
Holder for sensor systems	for essentim spot	1	01209
Holder for sensor systems	for essentim spider	1	01205

Holder for open fronted storage bins



The module enables the safe attachment of open fronted storage bins or stacking boxes with a mounting edge, which typically serves as a holding device for wall rails and shelving systems.

Open fronted storage bins not include in scope of delivery

Item	Type	PU	Item no.
Holder for open fronted storage bins	Suitable for storage bins such as SCHÄFER LF110, LF210, LF211, LF220	1	01158

Modules

Holder for wash bottles



The module enables easy attachment of wash bottles. The module can also be used to store screw top bottles of similar sizes.

Wash bottle not included in scope of delivery

Item	Type	PU	Item no.
Holder for wash bottles	for 500 ml (up to \varnothing 79 mm)	1	01146
Holder for wash bottles	for 1000 ml (up to \varnothing 99 mm)	1	01173

Holder for tablet



The module allows easy attachment of tablets in portrait and landscape format. The tilted angle ensures good visibility and good usability of the display. The module can be adjusted to different tablet sizes via a locking mechanism, which can be adjusted in increments.

Tablet not included in scope of delivery

Item	Type	PU	Item no.
Holder for tablet		1	01124

Holder for well plates



Well plates can be inserted into the module and also stacked. The horizontal orientation ensures optimal storage, e.g. of cell cultures.

Well plate not included in scope of delivery

Item	Type	PU	Item no.
Holder for well plates		1	01125

Holder for ZEBRA hand-held scanner



The module enables the safe storage of a ZEBRA hand-held scanner TC22.

Scanner not included in scope of delivery

Item	Type	PU	Item no.
Holder for ZEBRA hand-held scanner	TC22 standing at an angle	1	01206
Holder for ZEBRA hand-held scanner	TC22 vertical standing	1	01200

Modules

Holder for ZEBRA printer ZD621



The module enables the safe storage of a ZEBRA printer ZD621.

Item	Type	PU	Item no.
Holder for ZEBRA printer	ZD621	1	01201

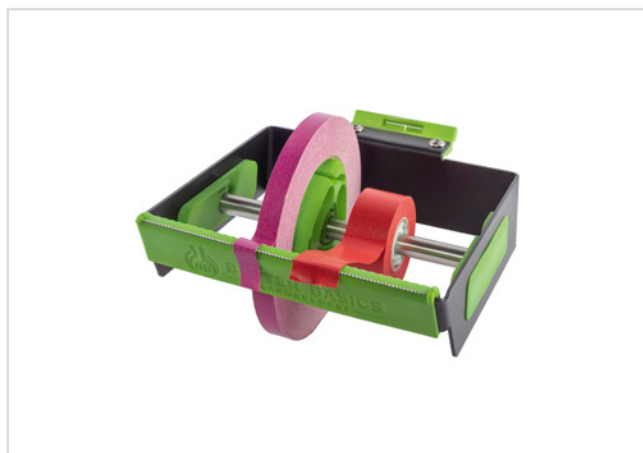
Shelf



The shelf can be used to store laboratory equipment, glassware and consumables up to a total weight of 3 kg, providing additional storage space for those items that cannot be stored in the SmartRack® support modules.

Item	Type	PU	Item no.
Shelf		1	01193

Dispenser for adhesive tapes



The tape or labeling tape dispenser is designed to hold up to 6 rolls with a core hole diameter of approximately 25 mm (1 inch) or approximately 76 mm (3 inches) with a total width of up to 160 mm. It is made of powder-coated steel, polyamide 12 and stainless steel. The serrated cutting device for easy cutting of the adhesive tape or labeling tape facilitates one-handed handling in the laboratory and a clean cut. The dispenser for adhesive tape or labeling tape is easy to clean. Two cores are included to accommodate rolls with a core hole diameter of approx. 25 mm (1 inch) or approx. 76 mm (3 inches).

Adhesive tapes not included in scope of delivery

Item	Type	PU	Item no.
Dispenser for adhesive tapes		1	01172
Additional core for adhesive tape dispenser	approx. 25 mm (1 inch) / approx. 51 mm (2 inch)	1	01198
Additional core for adhesive tape dispenser	approx. 25 mm (1 inch) / approx. 76 mm (3 inch)	1	01175

Dispenser for Parafilm® rolls



The dispenser for Parafilm® is designed to hold two standard rolls (50 mm) or one double roll (100 mm). It is made of aluminium and polyamide 12 and offers the possibility of clean and safe storage as well as easy removal of Parafilm® sealing film.

Parafilm® rolls not included in scope of delivery

Item	Type	PU	Item no.
Dispenser for Parafilm® rolls	without tear-off blade	1	01171
Dispenser for Parafilm® rolls	with tear-off blade	1	01214

Dispenser for glass pasteur pipettes



The dispenser for glass pasteur pipettes is made out of aluminium and polyamide 12 and polypropylene, has a front level indicator and holds up to 300 unpacked pasteur pipettes of a length of 150 mm or 230 mm. The dispenser is easy to clean and offers the possibility of hygienic storage and individual removal of the pasteur pipettes from the dispenser. Filling is performed via a hinged lid.

Pasteur pipettes not included in scope of delivery

Item	Type	PU	Item no.
Dispenser for glass pasteur pipettes	150 mm	1	01169
Dispenser for glass pasteur pipettes	230 mm	1	01170

Stand rod adapter



The stand rod adapter is attached to the slot rail like a module and provides an additional option for securing the SmartRack®. The supplied stand rod can be inserted into the stand rod adapter from all three directions in space and then fixed to an existing stand assembly, or other permanently installed stands in the laboratory. This virtually eliminates the possibility of the SmartRack® tipping over.

Item	Type	PU	Item no.
Stand rod adapter Ø 10 mm		1	01218
Stand rod adapter Ø 12 mm		1	01126

Lid for bin liner holder



The lid for the bin liner holder (article number: 01202) is an optional extension to the bin liner holder. Please note that it is only possible to add a lid to the bin liner holder for bin liner holders ordered from 2024 onwards.

Item	Type	PU	Item no.
Lid for bin liner holder		1	01192

Lid for storage box



The lid for the storage box is an optional extension to the storage box (article number: 01185 or 01142). Please note that upgrading the storage box with a lid is only possible for the storage box from order year 2024 or later. To use the storage box with storage box inserts, the lid must be removed or the storage box must be used with the lid open.

Item	Type	PU	Item no.
Lid for storage box	for 2 storage box inserts	1	01924
Lid for storage box	for 3 storage box inserts	1	01923

SmartStand

SmartStand for well plates



The SmartStand for Well Plates can be rotated 360°, allowing the well plates to be filled from either side and the alignment to be adjusted quickly. The incrementally adjustable tilt of up to 40° makes the wells much easier to see from the user's perspective, which supports precise and ergonomic work when pipetting.



*SmartStand with well plate,
Well plate not included in scope of delivery*



SmartStand without well plate

Item	Type	PU	Item no.
SmartStand for well plates		1	09001

Customization of SmartRack® Products

Better Basics Laborbedarf offers an unparalleled approach to laboratory workstation organisation with its customisable and modular solutions. Below is an overview of how our customisation services span the SmartRack® product line:

1. Customization of the SmartRack®

a) For the SmartRack® and the SmartRack® mini

Our SmartRack® system is fully customisable to suit the specific needs of your workspace. Both the standard and mini versions can be adapted to the dimensions of your equipment and workflow. From compact configurations to larger frameworks, we enhance your laboratory's organisation and efficiency.

b) Frame Size Adjustments

Adjustable widths and heights allow the SmartRack® to integrate seamlessly into fume hoods, safety workbenches, or experimental setups. Each tailored frame is paired with appropriately sized slot rails, ensuring modular compatibility and reliability.

2. Custom Modules

a) Tailored for Any Laboratory Equipment

Using advanced 3D printing technology, we create modules and holders in any shape or size to fit your laboratory equipment. From pipette holders to mounts for specialised glassware, our bespoke designs cater to your unique requirements. Our rapid prototyping process ensures swift delivery of tailored solutions.

Why Choose Better Basics for Customisation?

- 1. Precision Craftsmanship:** Each component is tailored to your exact specifications, guaranteeing optimal performance and seamless integration.
- 2. Fast Delivery:** Our in-house design and manufacturing teams ensure swift turnaround from concept to delivery.
- 3. Transparent Pricing:** Costs for customisation are agreed upon in advance, providing clarity and control.
- 4. Scalability:** Whether expanding an existing laboratory or building a new one, our products adapt to meet your growing needs.

Transform Your Laboratory Workspace

With Better Basics Laborbedarf, your laboratory can benefit from customised SmartRack® products. Visit customising.better-basics-laborbedarf.de or contact our team today to unlock the full potential of your laboratory space.

This concise yet comprehensive approach ensures your laboratory benefits from enhanced efficiency, organisation, and safety—all tailored to your specific needs.

Customizing

Examples for realised customisations based on customer requests

Special frame sizes

SmartRack® frame - customisable in width as well as height



SmartRack® frame - extra wide

For a special requirement we manufactured an extra wide frame of the SmartRack®. Due to the width, this SmartRack® makes optimal use of the working space in our customer's laboratory.

Special modules for laboratory accessories and laboratory glassware

Holder for special glassware



Double holder for glassware with ST10

For a project, a customer needed a double holder for glassware ST10. The module allows glassware with standard ground joint ST10 to be easily hung next to each other. The specially shaped recess prevents the glassware from falling out.

Of course, adaptations of this kind are also conceivable for other glassware.

Special modules for laboratory equipment

Holder for dandyVice wall mount



In cooperation with dandy innovations, a module for mounting a dandyVice wall bracket was developed. The combination of dandyVice wall mount and holder module from Better Basics Laborbedarf makes it easy to use the dandyVice in the SmartRack®.

Modules

Item	Type	Item no.	PU	Page
Additional core for adhesive tape dispenser	approx. 25 mm (1 inch) / approx. 76 mm (3 inch)	01175	1	23
Additional core for adhesive tape dispenser	approx. 25 mm (1 inch) / approx. 51 mm (2 inch)	01198	1	23
Barcode scanner holder	suitable for scanners such as Newland NLS-HR22 and Aplic 304674	01163	1	9
Dispenser for Parafilm® rolls	with tear-off blade	01214	1	23
Dispenser for Parafilm® rolls	without tear-off blade	01171	1	23
Dispenser for adhesive tapes		01172	1	23
Dispenser for glass pasteur pipettes	230 mm	01170	1	24
Dispenser for glass pasteur pipettes	150 mm	01169	1	24
Holder for 2 pipettes with hook		01180	1	17
Holder for 3 pipettes with hook		01145	1	17
Holder for Cup	for AKU® PP-Drinking cup, 500 ml	01213	1	10
Holder for Erlenmeyer flasks	Erlenmeyer flasks, Wide neck 25 ml, 100 ml, Erlenmeyer flasks, Narrow neck 250 ml, 500 ml	01108	1	11
Holder for Erlenmeyer flasks	Erlenmeyer flasks, Wide neck 250 ml, 500 ml, 1000 ml, Erlenmeyer flasks, Narrow neck 2000 ml, 3000 ml, 5000 ml	01140	1	11
Holder for bin liner		01202	1	16
Holder for cannula disposal container		01174	1	13
Holder for chromatography column	Ø 10 - 15 mm	01176	1	10
Holder for chromatography column	Ø 5 - 10 mm	01177	1	10
Holder for chromatography column	Ø 25 - 35 mm	01107	1	10
Holder for chromatography column	Ø 46 - 56 mm	01179	1	10
Holder for chromatography column	Ø 35 - 46 mm	01139	1	10
Holder for chromatography column	Ø 15 - 25 mm	01165	1	10
Holder for cuvettes	10 x (10 mm x 10 mm)	01183	1	14
Holder for glassware with ST14		01111	1	11
Holder for glassware with ST14, extended		01113	1	12
Holder for glassware with ST14, plus closure		01112	1	12
Holder for glassware with ST29		01114	1	11

Item overview

Item	Type	Item no.	PU	Page
Holder for glassware with ST29, extended		01116	1	12
Holder for glassware with ST29, plus closure		01115	1	12
Holder for glove / tissue boxes		01143	1	13
Holder for kitchen roll		01162	1	14
Holder for laboratory screw top bottles	100 - 1000 ml (GL45)	01122	1	15
Holder for laboratory screw top bottles	50 ml (GL32)	01121	1	15
Holder for laboratory screw top bottles	10 - 25 ml (GL25)	01120	1	15
Holder for microliter syringes		01155	1	15
Holder for open fronted storage bins	Suitable for storage bins such as SCHÄFER LF110, LF210, LF211, LF220	01158	1	19
Holder for pipette tip boxes		01147	1	17
Holder for pipettes	for Gilson® PIPETMAN® Classic / G	01166	1	16
Holder for pipettes	for INTEGRA VIAFLOW or for INTEGRA VOYAGER	01184	1	16
Holder for pipettes	for Eppendorf Multipette® E3 / E3x / stram / Xstream	01189	1	16
Holder for pipettes	for Eppendorf Reference® 2	01168	1	16
Holder for pipettes	for Eppendorf Reference®	01164	1	16
Holder for pipetting aid	for Thermo Scientific Matrix	01186	1	18
Holder for pipetting aid	for Eppendorf Easypet® 3	01203	1	18
Holder for pipetting aid	for HIRSCHMANN® pipetus®	01188	1	18
Holder for pipetting aid	for INTEGRA Pipetboy 2	01154	1	18
Holder for pipetting aid	for INTEGRA Pipetboy pro	01156	1	18
Holder for pipetting aid	for BRAND accu-jet® pro	01178	1	18
Holder for pipetting aid	for BRAND accu-jet® S	01157	1	18
Holder for pipetting aid	for TPP Turbo-Fix	01207	1	18
Holder for pipetting aid	for VWR® Powerpette Pro	01199	1	18
Holder for sensor systems	for essentim sphere	01208	1	19
Holder for sensor systems	for essentim spot	01209	1	19
Holder for sensor systems	for essentim spider	01205	1	19
Holder for separating funnel / shaking funnel	Ø > 105 mm	01153	1	18
Holder for separating funnel / shaking funnel	Ø 45 - 85 mm	01152	1	18
Holder for separating funnel / shaking funnel	Ø 85 - 105 mm	01149	1	18
Holder for tablet		01124	1	20
Holder for wash bottles	for 500 ml (up to ø 79 mm)	01146	1	20

Item	Type	Item no.	PU	Page
Holder for wash bottles	for 1000 ml (up to \varnothing 99 mm)	01173	1	20
Holder for well plates		01125	1	21
Holder for ZEBRA hand-held scanner	TC22 vertical standing	01200	1	21
Holder for ZEBRA hand-held scanner	TC22 standing at an angle	01206	1	21
Holder for ZEBRA printer	ZD621	01201	1	22
Shelf		01193	1	22
Stand rod adapter \varnothing 10 mm		01218	1	24
Stand rod adapter \varnothing 12 mm		01126	1	24
Storage box	for 3 storage box inserts	01142	1	7
Storage box	for 2 storage box inserts	01185	1	7
Storage box insert – for centrifuge tubes	6 x 50 ml	01129	1	9
Storage box insert – for centrifuge tubes	6 x 15 ml, 4 x 50 ml	01102	1	9
Storage box insert – for centrifuge tubes	12 x 15 ml	01128	1	9
Storage box insert – for microreaction vessels	20 x 2 ml	01130	1	8
Storage box insert – for microreaction vessels	32 x 0,5 ml	01104	1	8
Storage box insert – for sample containers and test tubes	12 x \varnothing 10 - 20 mm	01160	1	8
Storage box insert – for sample containers and test tubes	15 x \varnothing 8 - 12 mm	01181	1	8
Storage box insert – for sample containers and test tubes	20 x \varnothing 3 - 10 mm	01161	1	8
Storage box insert – for sample containers and test tubes	6 x \varnothing 20 - 30 mm	01159	1	8
Storage box insert – for sample containers and test tubes	8 x \varnothing 18 - 22 mm	01182	1	8
Storage box insert – for small accessories		01148	1	7
Stainless steel round for insertion into pipette tip boxes		01167	1	17

Item overview

Additional Module accessories

Item	Type	Item no.	PU	Page
Lid for bin liner holder		01192	1	25
Lid for storage box	for 3 storage box inserts	01923	1	25
Lid for storage box	for 2 storage box inserts	01924	1	25

SmartStand

Item	Type	Item no.	PU	Page
SmartStand for well plates		09001	1	26

Net prices plus statutory VAT. | Valid from 01.01.2025
The general terms and conditions of Better Basics Laborbedarf GmbH apply.

Technical information:

- All products are washable with water and mild detergent. In addition all components can be wiped with alcohol-based disinfectants.
- The plastics and metals used are 100% recyclable.
- Our products are autoclavable (maximum temperature 121 °C).
- The plastic elements are resistant to heat deformation under normal laboratory conditions.
- To gently clean the anodised aluminium rail, we recommend using a pH-neutral hand-washing detergent. Ensure that the hand wash detergent is odourless and contains no perfumes, greases or additives. Clean the slot rail by hand and rinse thoroughly with clean water.

Note on joint tolerances for ST14:

- Maximum outside diameter at the narrowest point of the cone joint: 17.2 mm (larger diameters are too wide for the holder and cannot be held)
- Minimum outer diameter at the widest point of the cone joint: 18.0 mm (smaller diameters are too narrow for the holder and would fall out)

Note on joint tolerances for ST29:

- Maximum outside diameter at the narrowest point of the cone joint: 31.4 mm (larger diameters are too wide for the holder and cannot be held)
- Minimum outer diameter at the widest point of the cone joint: 32.8 mm (smaller diameters are too narrow for the holder and would fall out)

IMPORTANT TO NOTE: The SmartRack® and SmartRack® mini as well as the SmartCase and SmartStand are not suitable for the permanent storage of hazardous substances.

We reserve the right to make technical changes, material or model changes, errors and misprints excepted. If you have any further questions, please do not hesitate to contact us at contact@better-basics.de

For more detailed information, please visit our website:

Functionality of SLS 3D printing:	www.sls-3d-printing.better-basics-laborbedarf.de
Resistance to UV light:	www.uv-resistance.better-basics-laborbedarf.de
Resistance to aggressive media:	www.material-resistance.better-basics-laborbedarf.de
Sustainability and design-efficient manufacturing:	www.sustainability.better-basics-laborbedarf.de



Image: Building of the Better Basics Laborbedarf GmbH in Dresden

YOU ARE INTERESTED IN OUR PRODUCTS OR YOU HAVE FURTHER QUESTION?

Get in touch with us:

contact@better-basics.de

You can also find more information and news about our product innovations at www.Better-Basics-Laborbedarf.de

Better Basics Laborbedarf GmbH

Loebtauer Str. 69
01159 Dresden
Germany

T: +49 (0) 178 9617 577 (Direct customers)
T: +49 (0) 176 6233 8026 (Sales partners)
E: contact@better-basics.de
W: www.Better-Basics-Laborbedarf.de

Our request to you

Our products such as our SmartRack® are only as good as their users. With our roots in the Leibniz Institute for Polymer Research Dresden, our company Better Basics Laborbedarf stands for the tradition of "Made in Germany" quality. We feel in multiple aspects committed to this quality label for German companies, which stands for high innovative strength. Even beyond our product catalogue, the same applies for us at Better Basics: Just contact us if you have ideas for extensions or improvements or if you notice something in your daily laboratory routine that we should optimize right away.

We want to create the best possible working environment for you in the laboratory and we are grateful for any comments and inspiration. We can jointly shape the future of laboratory work by cooperating with scientists and researchers. Just like you, we're always looking for a way to make our world a little better every day.

Impress:

Better Basics Laborbedarf GmbH
Loebtauer Str. 69, G-01159 Dresden

E-Mail: info@better-basics.de

CEO: Mario Schneider

Commercial register: HRB 39524; Register court: Amtsgericht Dresden

VAT registration number: DE327508812

Distributed by

 **BIOMEDICA**
www.bmgrp.eu

